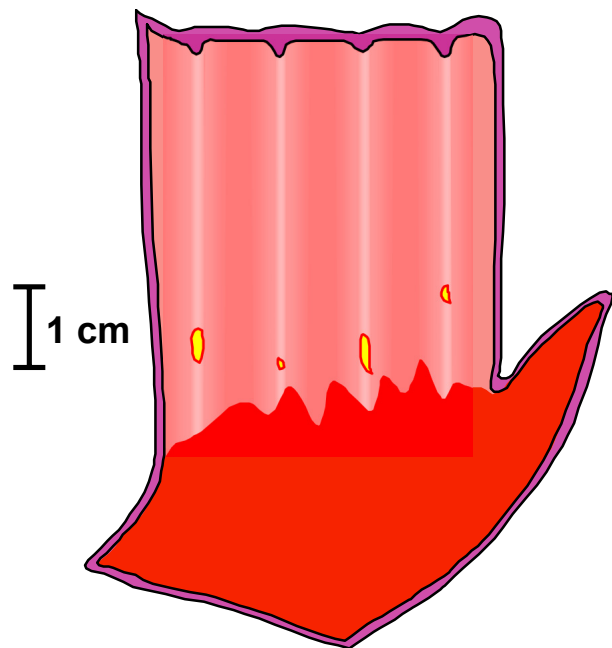


LOS ANGELES CLASSIFICATION of Reflux Esophagitis

Developed by the International Working Group for
the Classification of Reflux Oesophagitis (IWGCO)

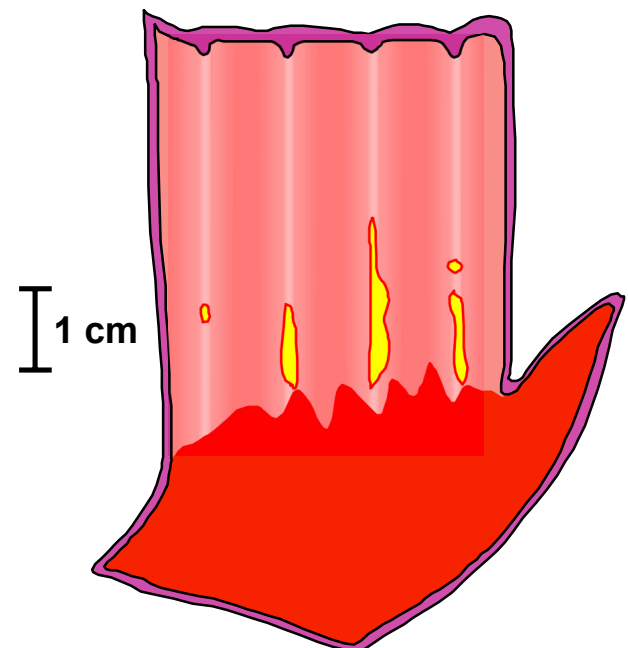


LA Grade A



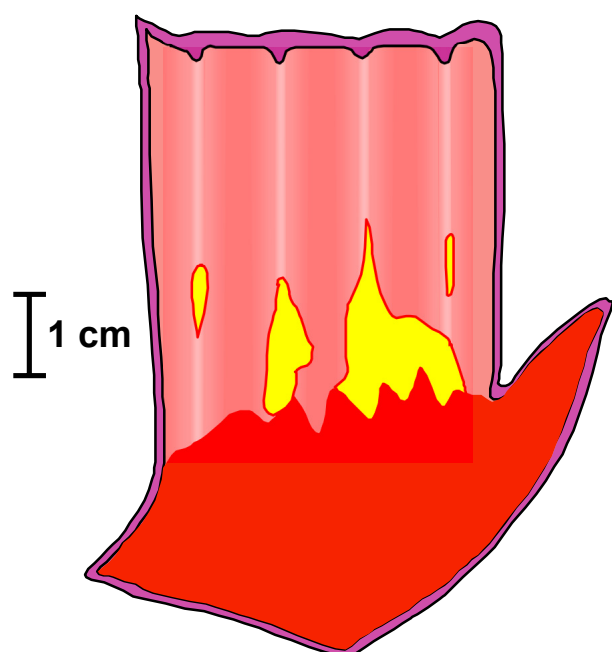
One (or more) mucosal break no longer than 5mm, that does not extend between the tops of two mucosal folds

LA Grade B



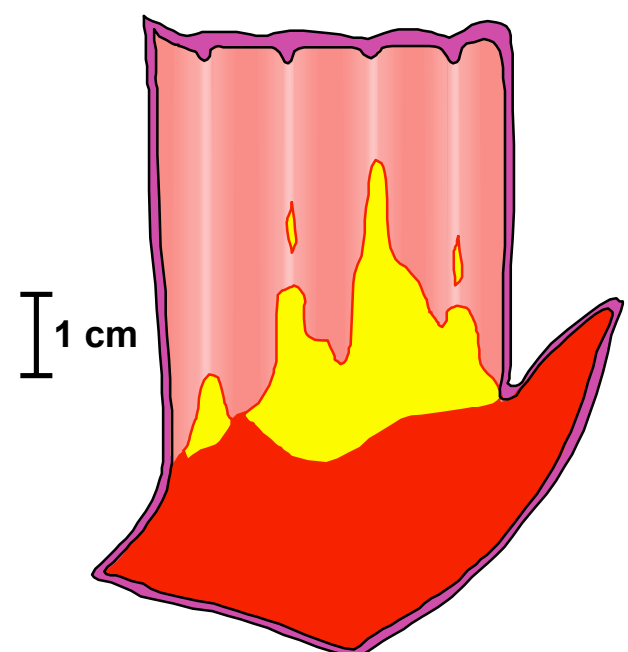
One (or more) mucosal break more than 5 mm long, that does not extend between the tops of two mucosal folds

LA Grade C



One (or more) mucosal break that is continuous between the tops of two or more mucosal folds, but which involves less than 75% of the circumference

LA Grade D



One (or more) mucosal break which involves at least 75% of the esophageal circumference